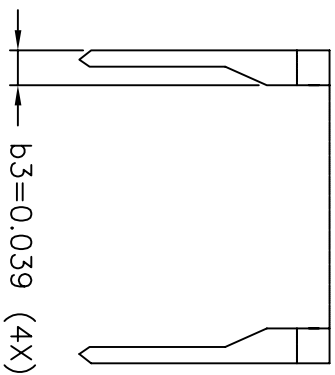
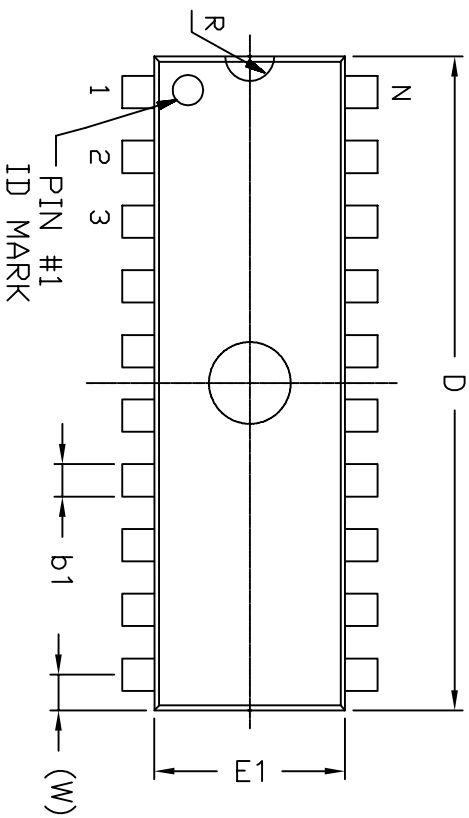


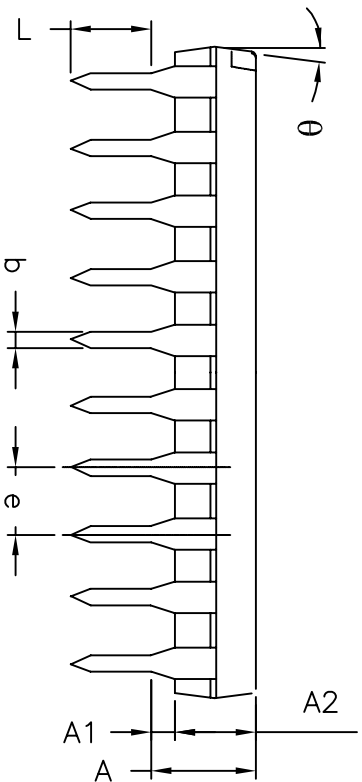
REVISION HISTORY

REV.	DESCRIPTION	DATE	APP'D
A	DRAWING ORIGINATION	02/11/09	PC

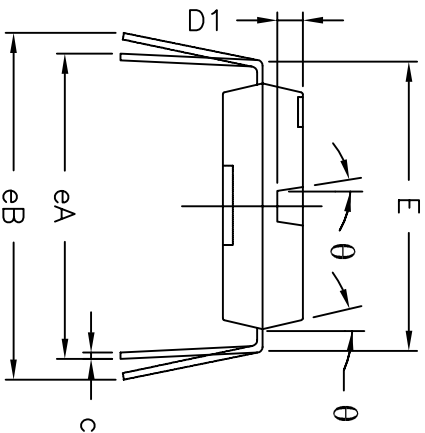
REMARKS:  
FOR 8LD AND 16LD  
ALL END LEADS (4X)  
ARE HALF LEAD TYPES



Top View



Side View



Front View

40 Pin PDP JEDEC MS-011 Variation AC									
SYMBOLS	DIMENSIONS IN INCH (Control Unit)				DIMENSIONS IN MM (Reference Unit)				
	MIN	NOM	MAX		MIN	NOM	MAX		
A	—	—	0.250	—	—	—	6.35		
A1	0.015	—	—	0.39	—	—	—		
A2	0.125	—	0.195	3.18	—	—	4.95		
b	0.014	—	0.022	0.36	—	—	0.56		
b1	0.030	—	0.070	0.77	—	—	1.77		
c	0.008	—	0.015	0.20	—	—	0.36		
D1	0.030	—	0.060	0.76	—	—	1.52		
E	0.600	—	0.625	15.24	—	—	15.87		
E1	0.485	—	0.580	12.32	—	—	14.73		
e	—	0.100 BSC	—	—	—	—	2.54 BSC		
eA	—	0.600 BSC	—	—	—	—	15.24 BSC		
eB	—	—	0.700	—	—	—	17.78		
L	0.115	—	0.200	2.93	—	—	5.08		
W	—	0.075 REF	—	—	—	—	1.91 REF		
R	—	0.030 BSC	—	—	—	—	0.76 BSC		
theta	4°	7°	10°	4°	7°	10°			
D	1.980	—	2.095	50.29	—	—	53.21		
N	—	40	—	—	—	—	40		

**EXAR CORPORATION**  
Powering Connectivity

40 PIN PDP PACKAGE OUTLINE

By: PC	Date: 02/11/09	Revision: A	Sheet: 1 OF 1
--------	----------------	-------------	---------------