

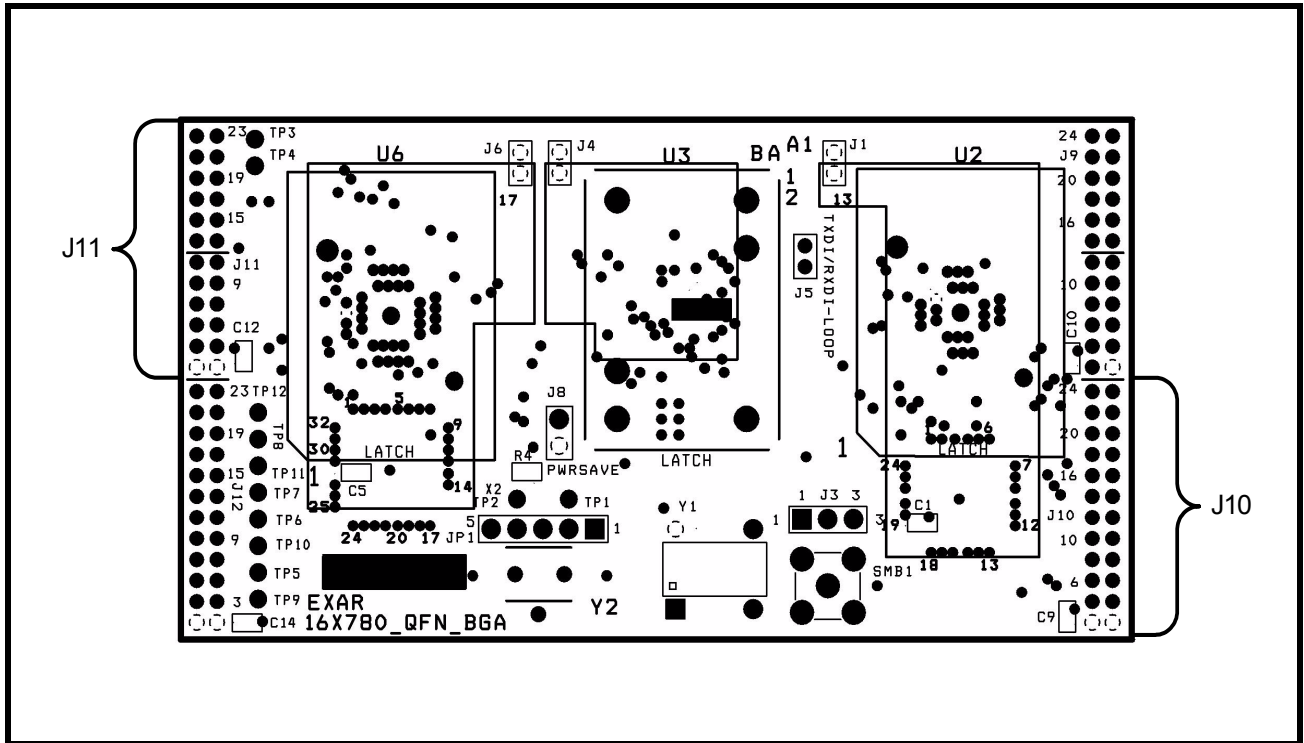
## 1.0 INTRODUCTION

This user's manual is for the XR16M780 evaluation board. Since this board can be used for the XR16M780/M770, XR16M680/M670 and XR16M580/M570, this user's manual will describe the hardware setup required to operate the different parts.

## 2.0 OVERVIEW

The XR16M780 evaluation board has three packages on it: 32-QFN, 25-BGA and 24-QFN. **Figure 1** shows a top view of XR16M780 evaluation board layout.

FIGURE 1. TOP VIEW OF XR16M780 EVALUATION BOARD LAYOUT



There are three units U6, U3 and U2 in the figure 1. Among them, U6 represents 32-QFN package. U3 is for 25-BGA package. And U2 is for 24-QFN package. There are four 24-pin jumpers on both left and right sides of XR16M780 evaluation board. The XR16M780 evaluation board actually uses two jumpers, J11 and J10. Jumper J11 locates in the upper left side of figure 1. It includes data lines, address lines, chip selects and other control signals of UART. Jumper J10 locates in the bottom right side of figure 1. It includes TXD, RXD and other modem control signals to and from UART.

**XR16M780 EVALUATION BOARD USER'S MANUAL**
**2.1 Evaluation Board Components**
**2.1.1 Common Jumpers**

The XR16M780 evaluation board connects with another mother board (designed by customers) through jumpers J11 and J10. **Table 1** shows the pin assignment for both J11 and J10.

**TABLE 1: COMMON JUMPERS J11 AND J10 PIN ASSIGNMENT**

J11 PIN NUMBER	SIGNAL	J10 PIN NUMBER	SIGNAL
J11 - 1	VCC	J10 - 1	VCC
J11 - 2	VCC	J10 - 2	VCC
J11 - 3	GND	J10 - 3	GND
J11 - 4	GND	J10 - 4	GND
J11 - 5	UART_RTS1#	J10 - 5	UART_D1
J11 - 6	UART_CTS1#	J10 - 6	UART_D0
J11 - 7	UART_DTR1#	J10 - 7	UART_D3
J11 - 8	UART_DSR1#	J10 - 8	UART_D2
J11 - 9	UART_TXD1	J10 - 9	UART_D5
J11 - 10	UART_RXD1	J10 - 10	UART_D4
J11 - 11	UART_CD1#	J10 - 11	UART_D7
J11 - 12	UART_RI1#	J10 - 12	UART_D6
J11 - 13	UART_CS2#	J10 - 13	UART_A1
J11 - 14	UART_INT2	J10 - 14	UART_A0
J11 - 15	UART_RTS2#	J10 - 15	UART_INT1
J11 - 16	UART_CTS2#	J10 - 16	UART_A2
J11 - 17	UART_DTR2#	J10 - 17	GND
J11 - 18	UART_DSR2#	J10 - 18	GND
J11 - 19	UART_TXD2	J10 - 19	UART_16/68#
J11 - 20	UART_RXD2	J10 - 20	UART_CS1#
J11 - 21	UART_CD2#	J10 - 21	SPARE_0
J11 - 22	UART_RI2#	J10 - 22	UART_RESET
J11 - 23	SPARE_1	J10 - 23	UART_IOW#
J11 - 24	SPARE_2	J10 - 24	UART_IOR#

### 2.1.2 Package Units

The XR16M780 evaluation board is designed for three different packages. Some components are required to install. Some are optional and some are not installed. **Table 2** shows the components:

**TABLE 2: COMPONENTS OF THE XR16M780 EVALUATION BOARD**

UNIT	PART	FUNCTION
U6	32-QFN part	Option. XR16Mx80/x70 32-QFN part.
U3	25-BGA part	Option. XR16Mx80/x70 25-BGA part.
U2	24-QFN part	Option. XR16Mx80/x70 24-QFN part.

## 2.2 Jumper Settings

### 2.2.1 Common jumpers

Common jumpers are those jumpers which should be set the same on the different evaluation boards, no matter which parts and packages. The **Table 3** shows the common jumpers setting on the evaluation board:

**TABLE 3: COMMON JUMPERS SETTINGS**

JUMPERS	FUNCTIONS	COMMENTS
J10	I/O Interface with mother board	Installed. Necessary to connect UART signals mother board.
J11	I/O Interface with mother board	Installed. Necessary to connect UART signals with mother board.
J9	I/O Interface with mother board	Option. Not necessary for single channel UART..
J12	I/O Interface with mother board	Option. Not necessary for single channel UART.

### 2.2.2 32-QFN package jumper

The following **Table 4** jumper settings apply to the 32-QFN package:

**TABLE 4: JUMPER SETTINGS FOR 32-QFN PACKAGE**

JUMPERS	FUNCTIONS	COMMENTS
J6	Power supply to UART	Trace between 1 & 2
J8	Selects POWERSAVE mode	Jumper in 1&2 enables POWERSAVE mode Jumper out 1&2 disables POWERSAVE mode
JP1	Selects crystal or external clock	Jumper in 1&2 and 4& 5 selects crystal <ul style="list-style-type: none"> <li>■ Trace between 1 &amp; 2</li> <li>■ Trace between 4 &amp; 5</li> </ul> Jumper out and pin 3 selects external clock

**XR16M780 EVALUATION BOARD USER'S MANUAL**
**2.2.3 25-BGA package**

The following **Table 5** jumper setting applies to the 25-BGA package:

**TABLE 5: JUMPER SETTINGS FOR 25-BGA PACKAGE**

JUMPERS	FUNCTIONS	COMMENTS
J4	Power supply to UART	Trace between 1 & 2
J3	Selects external clock	Jumper in 1&2 deselects external clock Jumper in 2&3 selects external clock ■ Trace between 2 & 3
J8	Selects POWERSAVE mode	Jumper in 1&2 enables POWERSAVE mode Jumper out 1&2 disables POWERSAVE mode
J5	Selects external loopback on UART side	Jumper in 1&2 selects external loopback on UART side Jumper out 1&2 deselects external loopback on UART side

**2.2.4 24-QFN package**

The following **Table 6** jumper setting applies to the 24-QFN package:

**TABLE 6: JUMPER SETTINGS FOR 24-QFN PACKAGE**

JUMPERS	FUNCTIONS	COMMENTS
J1	Power supply to UART	Trace between 1 & 2
J3	Selects different type of clocks	Jumper in 1&2 selects crystal Jumper in 2&3 selects external clock ■ Trace between 2 & 3
J8	Selects POWERSAVE mode	Jumper in 1&2 enables POWERSAVE mode Jumper out 1&2 disables POWERSAVE mode

**3.0 DRIVERS**

It is recommended that you contact [uarttechsupport@exar.com](mailto:uarttechsupport@exar.com) to inquiry and request drivers.

**4.0 SAMPLE INITIALIZATION ROUTINE AND SUPPORT**

For a sample initialization routine or if there are any questions, send an e-mail to [uarttechsupport@exar.com](mailto:uarttechsupport@exar.com).



**NOTICE**

EXAR Corporation reserves the right to make changes to the products contained in this publication in order to improve design, performance or reliability. EXAR Corporation assumes no responsibility for the use of any circuits described herein, conveys no license under any patent or other right, and makes no representation that the circuits are free of patent infringement. Charts and schedules contained here in are only for illustration purposes and may vary depending upon a user's specific application. While the information in this publication has been carefully checked; no responsibility, however, is assumed for inaccuracies.

EXAR Corporation does not recommend the use of any of its products in life support applications where the failure or malfunction of the product can reasonably be expected to cause failure of the life support system or to significantly affect its safety or effectiveness. Products are not authorized for use in such applications unless EXAR Corporation receives, in writing, assurances to its satisfaction that: (a) the risk of injury or damage has been minimized; (b) the user assumes all such risks; (c) potential liability of EXAR Corporation is adequately protected under the circumstances.

Copyright 2009 EXAR Corporation

Datasheet April 2009.

Send your UART technical inquiry with technical details to hotline: [uarttechsupport@exar.com](mailto:uarttechsupport@exar.com).

Reproduction, in part or whole, without the prior written consent of EXAR Corporation is prohibited.

---